



MILWAUKEE VOLLEYBALL GAME NOTES

10 NCAA TOURNAMENTS | 14 CONFERENCE CHAMPIONSHIPS | 12 ALL-AMERICANS

MKEPanthers.com || @MKE_Volleyball || Contact: Sean Engel || Email: engelsf@uwm.edu || Office/Cell: 414-435-8118

2023 SCHEDULE / RESULTS

Date	Opponent	TV	Time
August			
25	at Western Michigan		L, 1-3
26	vs. Northern Iowa		L, 0-3
26	vs. Villanova		L, 2-3

September			
1	vs. California Baptist		L, 1-3
1	vs. Montana State		W, 3-1
2	at St. Thomas (Minn.)		W, 3-0
4	NORTHWESTERN	ESPN+	W, 3-1
8	vs. Idaho		10:00 am
8	vs. Western Illinois		3:00 pm
9	at SIUE	ESPN+	1:00 pm
12	DEPAUL	ESPN+	6:00 pm
14	MARQUETTE	ESPN+	6:00 pm
15	AIR FORCE	ESPN+	6:00 pm
19	at Chicago State		6:00 pm
22	IUPUI *	ESPN+	6:00 pm
23	PURDUE FORT WAYNE *	ESPN+	4:00 pm
29	at Robert Morris *		5:00 pm
30	at Youngstown State *		1:00 pm

October			
3	GREEN BAY *	ESPN+	6:00 pm
6	NORTHERN KENTUCKY *	ESPN+	6:00 pm
7	WRIGHT STATE *	ESPN+	4:00 pm
13	at Oakland *	ESPN+	5:00 pm
14	at Cleveland State *		3:00 pm
20	at Purdue Fort Wayne *	ESPN+	5:00 pm
21	at IUPUI *		3:00 pm
27	YOUNGSTOWN STATE *	ESPN+	6:00 pm
28	ROBERT MORRIS *	ESPN+	4:00 pm
31	at Green Bay *	ESPN+	6:00 pm

November			
3	at Wright State *		5:00 pm
4	at Northern Kentucky *		2:00 pm
10	CLEVELAND STATE *	ESPN+	6:00 pm
11	OAKLAND *	ESPN+	4:00 pm

17	Horizon Quarterfinals	TBA
18	Horizon Semifinals	TBA
19	Horizon Championship	TBA

*Horizon League Game | All times Central
HOME GAMES IN BOLD

ESPN+ is offered at a price of \$9.99/month or \$99.99/year. Fans can sign-up or cancel at anytime.

It is also available as part of a bundle offer that gives subscribers access to Disney+, Hulu, and ESPN+ for \$13.99/month.

MATCH 8

MILWAUKEE vs IDAHO

September 8, 2023 | First Community Arena | Edwardsville, Illinois | 10:00 am



PANTHERS
3-4, 0-0 Horizon



VANDALS
1-5, 0-0 Big Sky



MATCH 9

MILWAUKEE vs WESTERN ILLINOIS

September 8, 2023 | First Community Arena | Edwardsville, Illinois | 3:00 pm



PANTHERS
3-4, 0-0 Horizon



LEATHERNECKS
0-5, 0-0 Ohio Valley



MATCH 10

MILWAUKEE at SIUE

September 9, 2023 | First Community Arena | Edwardsville, Illinois | 1:00 pm



PANTHERS
3-4, 0-0 Horizon



COUGARS
1-5, 0-0 Ohio Valley



QUICK NOTES

» After starting the year east in Michigan and west in Minnesota, the Milwaukee Volleyball Team will now head south to Illinois as the Panthers head to Edwardsville, Illinois to take on Idaho, Western Illinois, and SIUE as part of the Cougar Classic at First Community Arena.

» The Panthers are currently on a three-match winning streak with wins over Montana State, St. Thomas (Minn.), and Northwestern. The Panthers have not won four consecutive matches since the final four games of the regular season in 2021.

» With the team's win over Northwestern in Milwaukee's home opener this past Monday, the Panthers have now won four matches over Big Ten opponents. The team owns two wins over Purdue, and now one each over both Northwestern, and Wisconsin.

» This will be Milwaukee's first-ever visit to Edwardsville, Illinois as a Division I program (since 1990).

» The Panthers are led by head coach Susie Johnson, who enters her 17th season at the helm of the program and her 27th season overall with the program. Over her first 26 years, Johnson has been a part of 493 Panther wins, including 267 as head coach.

HEAD TO HEAD

CATEGORY	MILWAUKEE	IDAHO	WESTERN ILLINOIS	SIUE
Kills (Team/Opp)	339/365	211/265	201/263	252/293
Errors (Team/Opp)	135/159	119/98	107/81	127/135
Attempts (Team/Opp)	928/977	663/673	665/704	778/814
Attacking Percent (Team/Opp)	.220/.211	.139/.248	.141/.259	.161/.194
Assists (Team/Opp)	317/347	196/247	183/242	234/265
Assists per Set (Team/Opp)	11.7/12.9	9.8/12.4	9.6/12.7	9.8/11.0
Service Aces (Team/Opp)	21/46	32/37	20/27	34/42
Digs (Team/Opp)	378/392	263/281	304/317	318/332
Total Blocks (Team/Opp)	66/59.5	35/44	23/40	53/47.5

**General Information**

Location	Milwaukee, Wis.
Founded	1885
Enrollment	24,836
Nickname	Panthers
Colors	Black and Gold
Field/Capacity	Klotsche Center/2,500
Affiliation	NCAA Division I
Conference	Horizon League
Chancellor	Mark Mone
Director of Athletics	Amanda Braun
Associate AD/SWA	Kathy Litzau
Ticket Office Phone	414-229-5886

Team History

First Year of Volleyball	1973
All-Time Record	1135-684-9
First Year in Division I	1990
NCAA Division I Record	568-431
NCAA Tournament Appearances	10
Last NCAA Appearance	2013
Last NCAA Opponent	Wisconsin
Result	L, 3-0

2022 Team Information

Overall Record	10-20
Home/Away/Neutral	6-4/3-10/1-6
Horizon Record	9-9
League Finish	5th/10
League Tournament Finish	Loss in Quarterfinals
Starters Returning/Lost	7/0
Letterwinners Returning/Lost	13/0

Coaching Staff

Head Coach	Susie Johnson
	Idaho State '93
Milwaukee Record	267-204
Office Phone	414-229-4483
Associate Head Coach	Lindsey Vanden Berg
	Milwaukee '03
Assistant Coach	Nikki Zimmerman
	Iowa '14
Assistant Coach	Will Hall
	UW-Stout '00
Athletic Trainer	Katie Wissing
	Saint Louis '21

Media Relations

Director of Ath. Comm./VB Contact	Sean Engel
Office/Cell Phone	414-435-8118
E-mail	engelsf@uwm.edu
Assistant AD Communications	Chris Zills
Athletic Communications Assistant	Seth Dittmer
Content Creation & Strategy	Rachel Klemp
Multimedia Services	Andrew Levesque
Athletics Website	www.mkepanthers.com

2023 HORIZON LEAGUE STANDINGS

Team	Horizon League			Overall			Strk
	W	L	Pct.	W	L	Pct.	
Cleveland State	0	0	---	5	2	.714	W1
IUPUI	0	0	---	4	2	.667	L1
Oakland	0	0	---	3	3	.500	L1
Purdue Fort Wayne	0	0	---	3	3	.500	W3
Youngstown State	0	0	---	3	3	.500	L1
Milwaukee	0	0	---	3	4	.429	W3
Robert Morris	0	0	---	2	3	.400	L1
Green Bay	0	0	---	2	4	.333	L3
Northern Kentucky	0	0	---	2	4	.333	W1
Wright State	0	0	---	2	4	.333	L1

AROUND THE HORIZON LEAGUE

September 8	Youngstown State at Bethune-Cookman	9:00 am
	Wright State vs. UIC	10:00 am
	Eastern Michigan at Oakland	11:00 am
	IUPUI at South Dakota	11:00 am
	Purdue Fort Wayne vs. Kent State	11:00 am
	Northern Kentucky vs. Butler	12:00 pm
	IUPUI vs. Drake	4:00 pm
	Wright State vs. Ball State	4:00 pm
	Purdue Fort Wayne at Niagara	5:00 pm
	Harvard at Cleveland State	5:00 pm
	Kansas City at Oakland	6:00 pm
	Northern Kentucky at Morehead State	6:00 pm
	Robert Morris at George Mason	6:00 pm
	Youngstown State at Florida Atlantic	6:00 pm
	Green Bay at North Dakota	8:00 pm
September 9	Youngstown State vs. Incarnate Word	9:00 am
	Robert Morris vs. Radford	10:00 am
	Green Bay vs. New Mexico	10:00 am
	Northern Kentucky vs. Indiana State	10:00 am
	Purdue Fort Wayne at Canisius	11:00 am
	Wright State at Dayton	12:00 pm
	Chicago State at Oakland	2:00 pm
	Bucknell at Cleveland State	4:00 pm
	Robert Morris vs. Brown	5:00 pm
September 12	Oakland at Toledo	5:00 pm
September 13	Southern Indiana at IUPUI	5:00 pm

HORIZON LEAGUE STATISTICAL LEADERS**Hitting Percent**

1. Ari Miller (MKE)398
2. Skyy Smith (NKU)377
3. Ellie Kurpeikis (GB)375
4. Morgan Ostrowski (IUPUI)366
5. Iris Riegel (PFW)323

Kills/Set

1. Panna Ratkai (PFW)	3.91
2. Abby Ryan (RMU)	3.85
3. Jazmin Vergara (YSU)	3.72
4. Patti Cesarini (OAK)	3.61
5. Laken Vos (CSU)	3.50

Assists/Set

1. Calli Gentry (GB)	10.17
2. Katie Meyer (WSU)	9.23
3. Taya Haffner (PFW)	8.48
4. Karly Klaer (CSU)	8.00
5. Grace Purichia (IUPUI)	7.44

Service Aces/Set

1. Andrew Bortulin (WSU)	0.68
2. Grace Purichia (IUPUI)	0.56
3. Addie Evans (IUPUI)	0.52
4. Hanna Vanden Berg (GB)	0.48
5. Two players tied	0.45

Blocks/Set

1. Madison Olinger (CSU)	1.35
2. Allie Siefke (NKU)	1.17
3. Tiffany Paalman (GB)	1.10
4. Julia Sell (YSU)	1.08
5. Skyy Smith (NKU)	1.05

Digs/Set

1. Isidora Sisic (YSU)	5.20
2. Emily Wichmann (OAK)	5.13
3. Emma Walker (CSU)	4.27
4. Jenny Wessling (WSU)	4.05
5. LonDynn Betts (PFW)	4.04

GAME NOTES

SCOUTING THE COMPETITION – IDAHO

Idaho is off to a 1-5 start in 2023 with its lone win coming over UC Riverside on August 27. Last weekend, the Vandals lost all three of their matches against UC San Diego, host Gonzaga, and Air Force in Spokane, Washington.

The team is hitting just .139 on the season, while also totaling 211 kills, 196 assists, 32 aces, 263 digs, and 35 blocks. Zuzanna Wiexzorek leads the way with 40 kills, while Lacy Cox and Natalia Wielgus have been splitting duties on setting with Cox picking up 92 and Wielgus amassing 78. Aine Doty is the team's defensive leader with 80 digs, while Renata Lopez Morales leads the squad with 18 blocks.

SCOUTING THE COMPETITION – WESTERN ILLINOIS

Winless on 2023 so far, the Leathernecks are looking to get their first win of the year this weekend against Idaho, SIUE or Milwaukee. The team has taken single sets from both Murray State and Oakland, while coming closest to its first win of the year in its most recent match vs. Eastern Michigan, falling 3-2.

With 201 kills and a .141 hitting percentage, the team has struggled offensively while connecting on 20 aces on the year with 304 digs and 23 blocks. Keyana Cruse has a team-leading 49 kills, while Maggie Craker has 154 assists to lead the way. On the defensive side of the ball Karli Wenzel has 78 digs, while Grave Kremer leads the team with 11 blocks on the young season.

SCOUTING THE COMPETITION – SIUE

With six matches under their belt in 2023 the Cougars of SIUE are 1-5 on the year, winning their opener in four sets against Eastern Michigan, before falling to Bradley, IUPUI, UIC, Western Michigan, and UAB.

With a .161 hitting percentage and 252 kills on the year, SIUE trails just Milwaukee in terms of the four offenses that will be on display at First Community Arena. Three Cougars have more than 40 kills on the season including Julia Treichel, with a team-best 49 as she is hitting .203 on the year. Alyse Drifka has a team-best 106 assists, while Corinna Jones has 78 helpers on the year. Abi Banitt has 76 digs to lead the defensive effort as Treichel has 55 of her own; up front it's been Priscilla Jones with 19, Chelsey Abel with 18 and Sydney Hummert with 16 blocks to lead a team that has totaled 53 on the 2023 season.

SERIES HISTORY

This will be Milwaukee's third all-time meeting with the Vandals, but first since September of 1994. The Panthers dropped both matches in three sets, with the 1992 matchup taking place in Idaho, while the 1994 edition took place in Madison, Wisconsin.

Milwaukee has faced Western Illinois on seven occasions entering action on Friday but have met the Leathernecks just once since August of 1996. When the teams met in Milwaukee in August of 2016, the Panthers rolled by Western Illinois in three sets, sweeping the match 25-20, 25-14, and 25-12.

Meeting for the first time since 2010, the Panthers look to remain unblemished against host SIUE in their third all-time meeting. The Panthers won the inaugural meeting in 2008, before sweeping the Cougars in 2010. This will be Milwaukee's first-ever trip to face the Cougars in Edwardsville.

THE MILLENNIUM IS HERE!

This season, Milwaukee will play its 1,000th match as a Division I program in its 34th season of competition at the highest collegiate level. The match is scheduled to take place on Friday, September 8, when the Panthers take on Western Illinois in Edwardsville, Illinois as part of the Cougar Classic.

Milwaukee played its first Division I match on August 31, 1990 against Wright State before taking on Western Illinois later in the day at a tournament hosted by the Leathernecks.

LAST TIME OUT

For just the fourth time in program history, Milwaukee knocked off an opponent from the Big Ten Conference, winning a four-set match over the Northwestern Wildcats at home on Monday evening. The Panthers and Wildcats were even on offense with all three sets that Milwaukee won, coming by just three points or less in each set.

Natalie Schmitz had 17 kills to tie her career high for the third time this season, while the Panthers continued to block the ball well at the net with Ari Miller leading the way with six blocks. The Panthers also had five service aces on offense, while Josie Johnson and Kaley Blake continued to pass the ball well to the front line as the duo combined for 40 of Milwaukee's 47 assists.

The Panthers are on a three-match winning streak dating back to last weekend, when the team bounced Montana State in four sets, while disposing of host St. Thomas (Minn.) in their home tournament. The win over Northwestern made it three in a row to tie last year's longest winning streak as the Panthers won three in a row in mid-September against Horizon foes Purdue Fort Wayne, Youngstown State, and Robert Morris. The last time the team won four matches in a row came at the end of the regular season in 2021, with wins over Cleveland State, Oakland, Robert

Morris and Youngstown State heading into the Horizon League Tournament as the top seed.

PLAYER OF THE WEEK

On Tuesday, the Horizon League named Milwaukee's Ari Miller as Player of the Week. It was Miller's first selection of the season and seventh of her career, as she led the Panthers to a 3-1 week.

Through four matches Miller continued her impressive offensive output to start her final collegiate season with 49 kills and had a .412 hitting percentage on 97 swings. Miller currently has a .398 hitting percentage, which is 21 percentage points in the clear of the second closest student-athlete in the Horizon League. She is also second in the Horizon League with 86 kills through the team's first seven matches.

Miller also had a strong showing on defense at the net as she collected 18 blocks including two solo blocks. Her 28 blocks currently lead the Horizon League, as do her 26 assisted blocks.

ALL-TOURNAMENT TEAMS

For the second weekend in a row, Ari Miller was named to the All-Tournament Team at the three-match weekend set. Miller earned a spot on the All-Tournament team at both Western Michigan as well as St. Thomas (Minn.) following her strong all-around performances.

BLOCK PARTY 2023

Following 179 blocks in 2019, the Panthers have increased their team's total block total every season, with 180 in 2021, and 211 in 2022. Through seven matches Milwaukee has 66 blocks and are on a strong pace to continue their upward trend in 2023.

The Panthers are currently leading the Horizon League with their 66 blocks and are also second in the league in solo blocks with 21 thus far. Czen Beneby and Lakyn Graves each have six solo blocks apiece, which is currently tied for fourth in the Horizon League for solo blocks.

NO SOPHOMORE SLUMP HERE

Following strong freshman campaigns in 2022 Natalie Schmitz and Josie Johnson both reached new career-high marks at their respective positions during the opening trio of matches in Michigan.

Schmitz has secured a career-best 17 kills in three matches this season, including the team's wins over Villanova, Montana State, and Northwestern. Johnson also reached a career-high mark in the match against the Bobcats of Montana State with 31 assists.

DOUBLE-QUARTER

In the team's match versus Villanova, Josie Johnson (30) and Kaley Blake (26) both accumulated more than 25 assists each for just the second time in their career together. The first instance came on October 18 of the 2022 season, when Johnson had 26 and Blake had 29 against IUPUI.

The last time two setters had more than 30 assists in a single match came back on August 29, 2021, when Blake had 32 assists and former teammate Rylie Vaughn had 31 in the team's five-set match against Valparaiso at the Klotsche Center.

MILLER'S TOP-10 ASCENT

With 86 kills this season, Ari Miller now has 1,266 for her career with the black and gold, that total now places her fifth on the all-time Division I kills list in Milwaukee program history. Next on the list is Julie Kolinske in fourth place all-time as Kolinske finished her career with 1,295 career kills.

In addition to her kills mark, Miller now has 28 blocks in her final collegiate season to give her 344 career blocks. She is currently in eighth on the all-time blocks list and needs 34 more to reach seventh on the all-time blocks list.

AVCA TEAM ACADEMIC AWARD

Back in July the Milwaukee volleyball team was recognized for its efforts in the classroom by the American Volleyball Coaches Association and were one of 201 Division I programs to earn academic recognition.

Teams are recognized for having a grade-point average of 3.30 or above on a 4.00 scale. The Panthers had a 3.67 combined team GPA in the fall 2022 term and a 3.71 this past spring semester.

LOOKING AHEAD

After the weekend in Edwardsville, Illinois, the Panthers are back home for five of its next six matches including three straight beginning with DePaul (Tuesday), and Marquette (Thursday) from the Big East Conference, followed by the Air Force Academy on Friday. All three matches will begin at 6:00 p.m. inside the Klotsche Center.

YOU ARE LOOKING LIVE

Thanks to ESPN+, Milwaukee volleyball will be readily available for viewers. The Horizon League and ESPN have an agreement that includes ESPN hosting the league's digital network on the ESPN+ platform. ESPN+, which will host the Horizon League women's soccer, men's soccer, and volleyball.

MILWAUKEE VOLLEYBALL ROSTER

No.	Name	Pos.	Ht.	Yr.	Hometown (High School/College)
1	Tatum Catalano	OH/RS	6-0	Jr.	Germantown, Wis. (Germantown)
2	Bri Geurts	RS/MB	6-0	Jr.	De Pere, Wis. (De Pere)
3	Lakyn Graves	MB	6-2	Jr.	Menomonee Falls, Wis. (Sussex Hamilton/Omaha)
4	Josie Johnson	S	5-7	So.	Burlington, Wis. (Waterford Union)
6	Ari Miller	MB	5-11	Gr.	Jackson, Wis. (Kettle Moraine Lutheran)
8	Kaley Blake	S	5-7	Sr.	Burlington, Wis. (Burlington)
9	Kati Goba	DS	5-4	Fr.	Mukwonago, Wis. (Wisconsin Lutheran)
10	Czhen Beneby	MB	6-3	So.	West Palm Beach, Fla. (Alexander W. Dreyfoos/Virginia)
11	Natalie Schmitz	OH	6-1	So.	Ham Lake, Minn. (Blaine)
12	Bella Lipski	MB	6-2	Fr.	Milwaukee, Wis. (Divine Savior Holy Angels)
13	Kara Erdmann	DS	5-6	So.	Forrester, Ill. (Forrester)
14	Madi Malone	OH	6-0	Jr.	Newark, Ill. (Newark)
15	Sarah Schrader	OH	5-8	Sr.	Sussex, Wis. (Sussex Hamilton)
16	Rachel Scott	RS	6-2	So.	Belvidere, Ill. (Belvidere North)
17	Mati Jakscht	DS	5-6	Gr.	East Troy, Wis. (East Troy)



**Tatum
Catalano**



**Bri
Geurts**



**Lakyn
Graves**



**Josie
Johnson**



**Ari
Miller**



**Kaley
Blake**



**Kati
Goba**



**Czhen
Beneby**



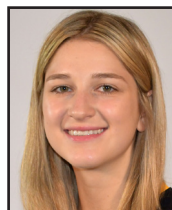
**Natalie
Schmitz**



**Bella
Lipski**



**Kara
Erdmann**



**Madi
Malone**



**Sarah
Schrader**



**Rachel
Scott**



**Mati
Jakscht**

COACHING STAFF

Head Coach: Susie Johnson (17th season)
Associate Head Coach: Lindsey Vanden Berg (17th season)
Assistant Coach: Nikki Zimmerman (third season)
Assistant Coach: Will Hall (first season)

ROSTER BY STATE

Wisconsin: Kaley Blake, Tatum Catalano, Bri Geurts, Kati Goba, Lakyn Graves, Mati Jakscht, Josie Johnson, Bella Lipski, Ari Miller, Sarah Schrader
Florida: Czhen Beneby
Illinois: Kara Erdmann, Madi Malone, Rachel Scott
Minnesota: Natalie Schmitz

PRONUNCIATION GUIDE

Czhen Beneby ZEN BEN-uh-bee
Tatum Catalano TAY-tum cat-uh-LAH-no
Bri Geurts GERTS
Lakyn Graves LAY-kin
Mati Jakscht YOTCH

ROSTER BY CLASS

Graduate Students: Ari Miller, Mati Jakscht
Seniors: Kaley Blake, Sarah Schrader
Juniors: Tatum Catalano, Bri Geurts, Lakyn Graves, Madi Malone
Sophomore: Czhen Beneby, Kara Erdmann, Josie Johnson, Natalie Schmitz, Rachel Scott
Freshman: Kati Goba, Bella Lipski



SUSIE JOHNSON

HEAD COACH

17TH SEASON

264-203 (.565) AT MILWAUKEE

Susie Johnson enters her 27th overall season with the Milwaukee volleyball program, including the last 16 seasons as head coach as she enters the 2023 season.

Johnson was named head coach in May of 2007 after 10 years as an assistant and associate head coach at Milwaukee. Since taking over the reins, Johnson has led Milwaukee to 264 wins, six regular-season titles, four league-tournament crowns, and four NCAA Tournament berths.

In her 26 total seasons at Milwaukee, the Panthers have compiled a 490-270 record. That number includes a 286-98 mark in league play and a 240-70 record at the Klotsche Center. The Panthers have also won 159 of their 190 league matches at home with Johnson on the bench.

With half of the roster new to the Milwaukee program in 2022, the Panthers mustered 10 wins while battling through a challenging non-conference slate that included five teams that were ranked by the AVCA, including No. 11 Purdue, who was the highest ranked opponent for a Panther squad since December of 2013. Three Panthers earned postseason honors from the Horizon League as Ari Miller was a first-team honoree, Madi Malone was a second teamer, and Natalie Schmitz was a member of the All-Freshman Team. Miller went on to become a member of the Horizon All-Academic Team as well as the College Sports Communicators Academic All-District team, becoming the first Panther to receive multiple selections by CSC/CoSIDA.

Her overall run has included the first undefeated Horizon League season in 17 years, a school-record 18-match winning streak and the program's best-ever NCAA Tournament performance - a heartbreaking five-set loss to Dayton in 2009.

In 2011, the Panthers went 25-5 overall and 16-0 in league play,

becoming the first Horizon League team to go through the league schedule without a loss since Notre Dame did it in 1994. Milwaukee also set a school record with 18 straight wins and nearly upset Iowa State in the first round of the postseason.

Johnson's efforts on the recruiting trail have led to nine league newcomers of the year during her tenure, including Malone in 2022, Bridget Wallenberger in 2016, and Rachel Neuberger in 2009. Plus, 24 Panther players have earned a spot on the league's all-newcomer team in the last 24 years. Panther players have then consistently developed into the best players in the Horizon League. In her 25 seasons in Milwaukee, Johnson has coached 11 League Players of the Year, with Kerri Schuh winning the award twice and Neuberger claiming the distinction in 2013.

In all, players have earned all-league honors 66 times under Johnson and the recognition for Panther players has extended far beyond the Horizon League. With Johnson's assistance, MKE players have earned AVCA All-America honors ten times and AVCA All-Region honors 22 times. Plus, three Panthers have earned AVCA Region Freshman of the Year accolades, including Neuberger and Kayla Price.

Johnson's playing background is at setter, where she earned All-Big Sky and All-Northwest Region honors at Idaho State. She was also a two-time Academic All-Big Sky honoree and has helped direct the Panthers to great success in the classroom, with two Academic All-Americans and a team GPA above 3.3.

A native of Racine, Johnson joined the Panther staff after serving as an assistant coach at Indiana State. She also worked at Idaho State and was head coach at UW-Parkside. She lives in Racine with her husband, C.J., son Ty, daughter Josie and stepson Brody.

Panthers 2023 Record When ...

At Home	1-0
On the Road	1-1
At a Neutral Site	1-3

In Three-Set Matches	1-1
In Four-Set Matches	2-2
In Five-Set Matches	0-1

Winning the First Set	3-1
Leading After Two Sets	1-0
Trailing After Two Sets	0-1
Tied After Two Sets	2-3

On Weekdays	2-2
On Weekends	1-2
On Mondays	1-0
On Tuesdays	0-0
On Wednesdays	0-0
On Thursdays	0-0
On Fridays	1-2
On Saturdays	1-2
On Sundays	0-0
In August	0-3
In September	3-1
In October	0-0
In November	0-0
vs. Horizon	0-0

2023 HORIZON LEAGUE PRESEASON POLL

School (1st place votes)	Points
1. Wright State (9)	99
2. Northern Kentucky (1)	85
3. Green Bay	76
4. Milwaukee	73
5. Cleveland State	66
6. Oakland	47
7. Purdue Fort Wayne	35
8. Youngstown State	33
T9. IUPUI	18
T9. Robert Morris	18

IT'S "MILWAUKEE"

A lot has been made of the correct way to talk about the University of Wisconsin-Milwaukee, especially in the area of athletics. It would be appreciated if you would refer to the athletics teams as either "Milwaukee" or "MKE". Your cooperation in this matter is greatly appreciated.

Milwaukee Athletics is making an effort to brand itself as "Milwaukee" instead of other references. Please avoid UW-Milwaukee, UW-M, Wisc.-Mil, UW-MIL, Wisconsin-Milwaukee, etc. We appreciate your assistance with this effort in advance.

2023 OVERALL STATISTICS

			Attack					Set		Serve				Dig		Blocking						
##	Player	SP	K	K/S	E	TA	PCT	A	A/S	SA	SE	SA/S	RE	DIG	DIG/S	BS	BA	TOT/S	BLK/S	BE	BHE	PTS
2	Geurts, Bri	22	35	1.59	16	80	.238	3	0.14	0	0	0.00	0	1	0.05	2	5	7	0.32	0	0	39.5
3	Graves, Lakyn	27	12	0.44	7	45	.111	0	0.00	3	7	0.11	0	13	0.48	6	17	23	0.85	1	0	29.5
4	Johnson, Josie	27	5	0.19	0	14	.357	154	5.70	1	7	0.04	0	57	2.11	0	0	0	0.00	0	5	6.0
6	Miller, Ari	27	86	3.19	16	176	.398	2	0.07	7	8	0.26	0	23	0.85	2	26	28	1.04	2	0	108.0
8	Blake, Kaley	27	0	0.00	0	8	.000	133	4.93	2	3	0.07	0	41	1.52	0	0	0	0.00	0	2	2.0
9	Goba, Kati	17	0	0.00	0	0	.000	4	0.24	0	5	0.00	3	23	1.35	0	1	1	0.06	0	0	0.5
10	Beneby, Czhen	22	29	1.32	20	79	.114	0	0.00	0	0	0.00	0	7	0.32	6	6	12	0.55	4	1	38.0
11	Schmitz, Natalie	27	92	3.41	40	272	.191	1	0.04	1	1	0.04	7	19	0.70	3	10	13	0.48	2	0	101.0
13	Erdmann, Kara	18	0	0.00	1	1	-1.000	10	0.56	1	1	0.06	2	44	2.44	0	0	0	0.00	0	0	1.0
14	Malone, Madi	27	67	2.48	30	207	.179	4	0.15	1	5	0.04	22	62	2.30	1	15	16	0.59	0	1	76.5
15	Schrader, Sarah	21	0	0.00	0	5	.000	4	0.19	4	4	0.19	6	75	3.57	0	0	0	0.00	1	0	4.0
16	Scott, Rachel	19	13	0.68	5	41	.195	1	0.05	0	0	0.00	0	7	0.37	1	10	11	0.58	2	0	19.0
17	Jakscht, Mati	1	0	0.00	0	0	.000	1	1.00	1	0	1.00	1	6	6.00	0	0	0	0.00	0	2	1.0
MILWAUKEE		27	339	12.56	135	928	.220	317	11.74	21	41	0.78	46	378	14.00	21	90	66	2.44	12	11	426.0
Opponents		27	365	13.52	159	977	.211	347	12.85	46	57	1.70	21	392	14.52	7	105	59.5	2.20	6	4	470.5

FINAL 2022 HORIZON LEAGUE STATISTICS

			Attack					Set		Serve				Dig		Blocking							
##	Player	SP	K	K/S	E	TA	PCT	A	A/S	SA	SE	SA/S	RE	DIG	DIG/S	BS	BA	TOT/S	BLK/S	BE	BHE	PTS	
1	Catalano, Tatum	29	14	0.48	4	38	.263	2	0.07	0	0	0.00	0	7	0.24	1	14	15	0.52	2	1	22.0	
2	Geurts, Bri	61	105	1.72	46	250	.236	7	0.11	10	10	0.16	1	19	0.31	2	54	56	0.92	5	0	144.0	
3	Graves, Lakyn	9	2	0.22	2	6	.000	0	0.00	0	1	0.00	0	3	0.33	1	8	9	1.00	0	0	7.0	
4	Johnson, Josie	61	7	0.11	1	35	.171	296	4.85	7	17	0.11	0	103	1.69	0	1	1	0.02	0	6	14.5	
5	Moan, Maddie	32	19	0.59	8	55	.200	1	0.03	0	0	0.00	0	3	0.09	0	16	16	0.50	0	0	27.0	
6	Miller, Ari	44	160	3.64	39	333	.363	2	0.05	7	12	0.16	0	15	0.34	11	40	51	1.16	4	0	198.0	
7	Erdmann, Kara	49	1	0.02	0	7	.143	33	0.67	6	11	0.12	28	154	3.14	0	0	0	0.00	0	0	7.0	
8	Blake, Kaley	61	7	0.11	0	29	.241	352	5.77	17	7	0.28	0	126	2.07	0	0	0	0.00	1	4	24.0	
10	Beneby, Czhen	60	116	1.93	56	264	.227	2	0.03	0	0	0.00	0	24	0.40	9	40	49	0.82	10	0	145.0	
11	Schmitz, Natalie	61	182	2.98	69	475	.238	5	0.08	7	6	0.11	4	40	0.66	1	21	22	0.36	4	0	200.5	
14	Malone, Madi	61	173	2.84	75	536	.183	16	0.26	6	8	0.10	24	175	2.87	0	23	23	0.38	1	0	190.5	
15	Schrader, Sarah	53	16	0.30	13	88	.034	27	0.51	10	14	0.19	29	162	3.06	0	3	3	0.06	3	1	27.5	
17	Jakscht, Mati	24	2	0.08	0	9	.222	3	0.13	0	1	0.00	6	41	1.71	0	0	0	0.00	0	0	2.0	
MILWAUKEE		61	804	13.18	313	2125	.231	746	12.23	70	87	1.15	113	872	14.30	25	220	135	2.21	30	12	1,009.0	
Opponents		61	804	13.18	324	2128	.226	749	12.28	113	122	1.85	70	850	13.93	29	227	142.5	2.34	22	15	1,059.5	

2023 SEASON BESTS

KILLS

Team: 65 vs. Villanova (Aug. 26)
 Individual: 19 (Ari Miller) vs. Villanova (Aug. 26)
 Opponent: 70 vs. Villanova (Aug. 26)

ATTACK PERCENTAGE (min. 10 kills)

Team: .321 at St. Thomas (Sept. 2)
 Individual: .545 (Ari Miller) at St. Thomas (Sept. 2)
 Opponent: .291 vs. Villanova (Aug. 26)

ASSISTS

Team: 60 (Twice)
 Individual: 31 (Josie Johnson) at St. Thomas (Sept. 2)
 Opponent: 67 vs. Villanova (Aug. 26)

ACES

Team: 6 vs. Villanova (Aug. 26)
 Individual: 2 (Five Times)
 Opponent: 13 vs. Montana State (Sept. 1)

DIGS

Team: 69 vs. Montana State (Sept. 1)
 Individual: 25 (Sarah Schrader) at St. Thomas (Sept. 2)
 Opponent: 59 vs. California Baptist (Sept. 1)

TOTAL BLOCKS

Team: 13 at Western Michigan (Aug. 25)
 Individual: 6 (Ari Miller) vs. Northwestern (Sept. 4)
 Opponent: 12.5 vs. Northwestern (Sept. 4)

2023 SCHEDULE AND RESULTS

Date	Opponent	Score	Set-by-set	Overall	Horizon Time	Att.
<i>WESTERN MICHIGAN TOURNAMENT</i>						
Aug. 25	at Western Michigan	L, 1-3	15-25, 25-21, 20-25, 12-25	0-1		251
Aug. 26	vs. Northern Iowa	L, 0-3	22-25, 23-25, 20-25	0-2		117
Aug. 26	vs. Villanova	L, 2-3	22-25, 25-22, 23-25, 25-18, 15-17	0-3		153
<i>ST. THOMAS TOURNAMENT</i>						
Sept. 1	vs. California Baptist	L, 1-3	25-23, 13-25, 22-25, 19-25	0-4		153
Sept. 1	vs. Montana State	W, 3-1	26-24, 22-25, 25-16, 25-22	1-4		214
Sept. 2	at St. Thomas (Minn.)	W, 3-0	25-19, 25-14, 25-18	2-4		406
Sept. 9	NORTHWESTERN	W, 3-1	25-23, 14-25, 25-22, 25-23	3-4		637
<i>SIUE TOURNAMENT</i>						
Sept. 8	vs. Idaho				10:00 am	
Sept. 8	vs. Western Illinois				3:00 pm	
Sept. 9	at SIU-Edwardsville				1:00 pm	
Sept. 12	DEPAUL				6:00 pm	
Sept. 14	MARQUETTE				6:00 pm	
Sept. 15	AIR FORCE				6:00 pm	
Sept. 19	at Chicago State				6:00 pm	
Sept. 22	IUPUI *				6:00 pm	
Sept. 23	PURDUE FORT WAYNE *				4:00 pm	
Sept. 29	at Robert Morris *				5:00 pm	
Sept. 30	at Youngstown State *				1:00 pm	
Oct. 3	GREEN BAY *				6:00 pm	
Oct. 6	NORTHERN KENTUCKY *				6:00 pm	
Oct. 7	WRIGHT STATE *				4:00 pm	
Oct. 13	at Oakland *				5:00 pm	
Oct. 14	at Cleveland State *				3:00 pm	
Oct. 20	at Purdue Fort Wayne *				5:00 pm	
Oct. 21	at IUPUI *				3:00 pm	
Oct. 27	YOUNGSTOWN STATE *				6:00 pm	
Oct. 28	ROBERT MORRIS *				4:00 pm	
Oct. 31	at Green Bay *				6:00 pm	
Nov. 3	at Wright State *				5:00 pm	
Nov. 4	at Northern Kentucky *				2:00 pm	
Nov. 10	CLEVELAND STATE *				6:00 pm	
Nov. 11	OAKLAND *				4:00 pm	
Nov. 17	Horizon League Quarterfinals ^				TBA	
Nov. 18	Horizon League Semifinals ^				TBA	
Nov. 19	Horizon League Championship ^				TBA	

Home Games in **BOLD** | * Horizon League Match | ^ Horizon League Tournament

SEASON & CAREER HIGHS

1 Tatum Catalano | Jr. | OH/RS**2023 Season Highs**

Kills n/a
 Attempts n/a
 Hitting % n/a
 Blocks n/a
 Digs n/a
 Aces n/a
 Assists n/a

Career Highs

Kills 4 (Twice)
 Attempts 12 (9/9/22 vs. LSU)
 Hitting % .. 1.000 [1-0-1] (10/7/22 vs. CSU)
 Blocks 4 (Twice)
 Digs 4 (10/8/22 vs. OAK)
 Aces same
 Assists 1 (Twice)

4 Josie Johnson | So. | S**2023 Season Highs**

Kills 1 (Five Times)
 Attempts 4 (9/4 vs. Northwestern)
 Hitting % 1.000 [1-0-1] (Three Times)
 Blocks n/a
 Digs 13 (9/1 vs. Mont. St.)
 Aces 1 (9/1 vs. Cal. Baptist)
 Assists 31 (9/1 vs. Mont. St.)

Career Highs

Kills 2 (Twice)
 Attempts 6 (9/23/22 vs. YSU)
 Hitting % 1.000 [1-0-1] (Four Times)
 Blocks 1 (Twice)
 Digs 15 (9/2/22 vs. Utah)
 Aces 2 (9/27/22 at IUPUI)
 Assists same

9 Kati Goba | Fr. | DS**2023 Season Highs**

Kills n/a
 Attempts n/a
 Hitting % n/a
 Blocks 1 (9/1 vs. Mont. St.)
 Digs 12 (9/2 vs. St. Thomas)
 Aces n/a
 Assists 1 (Four Times)

Career Highs

Kills n/a
 Attempts n/a
 Hitting % n/a
 Blocks same
 Digs same
 Aces n/a
 Assists same

2 Bri Geurts | Jr. | RS/MB**2023 Season Highs**

Kills 11 (9/1 vs. Mont. St.)
 Attempts 18 (9/1 vs. Mont. St.)
 Hitting % . .750 [3-0-4] (8/25 vs. Villanova)
 Blocks 3 (8/25 at West. Michigan)
 Digs 1 (9/1 vs. Cal. Baptist)
 Aces n/a
 Assists 2 (9/4 vs. Northwestern)

Career Highs

Kills 13 (Twice)
 Attempts 30 (9/17/22 vs. New Mexico St.)
 Hitting %750 [3-0-4] (Twice)
 Blocks 9 (10/8/22 vs. Oakland)
 Digs 6 (9/2/22 vs. Utah)
 Aces 2 (Five Times)
 Assists 3 (Twice)

6 Ari Miller | Gr. | MB**2023 Season Highs**

Kills 19 (8/26 vs. Villanova)
 Attempts 33 (8/26 vs. Villanova)
 Hitting % .545 [13-1-22] (9/2 at St. Thom)
 Blocks 6 (9/4 vs. Northwestern)
 Digs 6 (Twice)
 Aces 2 (Twice)
 Assists 1 (Twice)

Career Highs

Kills 30 (9/17/21 vs. West. Michigan)
 Attempts 50 (9/17/21 vs. West. Michigan)
 Hitting % . .688 [11-0-16] (9/24/22 vs. RM)
 Blocks 10 (10/13/19 at Oakland)
 Digs 6 (Twice)
 Aces 3 (Three Times)
 Assists 2 (Five Times)

10 Czhen Beneby | So. | MB**2023 Season Highs**

Kills 6 (9/1 vs. Cal. Baptist)
 Attempts 17 (8/26 vs. Villanova)
 Hitting %400 [8-2-15] (9/4 vs. NW)
 Blocks 5 (8/25 at West. Michigan)
 Digs 4 (8/26 vs. Villanova)
 Aces n/a
 Assists n/a

Career Highs

Kills 15 (11/1/22 vs. PFW)
 Attempts 26 (11/5/22 at CSU)
 Hitting % .. .800 [8-0-10] (9/23/22 vs. YSU)
 Blocks 6 (Three Times)
 Digs 5 (10/22 at YSU)
 Aces same
 Assists 1 (Three Times)

3 Lakyn Graves | Jr. | MB**2023 Season Highs**

Kills 3 (9/1 vs. Cal. Baptist)
 Attempts 11 (9/1 vs. Cal. Baptist)
 Hitting %200 [1-0-5] (9/1 vs. Mont. St.)
 Blocks 5 (9/1 vs. Mont. St.)
 Digs 6 (8/25 at West. Michigan)
 Aces 2 (8/26 vs. Villanova)
 Assists n/a

Career Highs

Kills 10 (9/16/21 vs. Weber St.)
 Attempts 30 (9/16/21 vs. Weber St.)
 Hitting % . .600 [7-1-10] (9/23/21 vs. STM)
 Blocks 13 (9/3/21 vs. Arizona State)
 Digs same
 Aces same
 Assists same

8 Kaley Blake | Sr. | S**2023 Season Highs**

Kills n/a
 Attempts 2 (Twice)
 Hitting %000 [0-0-1] (Four Times)
 Blocks n/a
 Digs 11 (8/26 vs. Villanova)
 Aces 1 (Twice)
 Assists 26 (Twice)

Career Highs

Kills 2 (Twice)
 Attempts 6 (Twice)
 Hitting % 1.000 [2-0-2, 1-0-1] (4x)
 Blocks 1 (9/24/21 at PFW)
 Digs 17 (10/1/22 at NKU)
 Aces 4 (9/27/22 at IUPUI)
 Assists 33 (8/28/22 at Notre Dame)

11 Natalie Schmitz | So. | OH**2023 Season Highs**

Kills 17 (Three Times)
 Attempts 51 (9/1 vs. Cal. Baptist)
 Hitting %450 [11-2-20] (9/2 at STM)
 Blocks 4 (9/1 vs. Montana State)
 Digs 4 (9/1 vs. Cal. Baptist)
 Aces 1 (8/25 vs. UNI)
 Assists 1 (9/1 vs. Cal Baptist)

Career Highs

Kills same
 Attempts same
 Hitting % . .471 [9-1-17] (9/20/22 vs. PFW)
 Blocks 4 (Two Times)
 Digs 6 (9/27/22 at IUPUI)
 Aces 3 (10/8/22 vs. OAK)
 Assists 1 (Seven Times)

SEASON & CAREER HIGHS

12 Bella Lipski | Fr. | MB**2023 Season Highs**

Kills	n/a
Attempts	n/a
Hitting %	n/a
Blocks	n/a
Digs	n/a
Aces	n/a
Assists	n/a

Career Highs

Kills	n/a
Attempts	n/a
Hitting %	n/a
Blocks	n/a
Digs	n/a
Aces	n/a
Assists	n/a

15 Sarah Schrader | Sr. | DS**2023 Season Highs**

Kills	n/a
Attempts	3 (8/26 vs. Villanova)
Hitting %000 [0-0-1] (Twice)
Blocks	n/a
Digs	25 (9/2 at St. Thomas)
Aces	2 (Twice)
Assists	2 (9/4 vs. Northwestern)

Career Highs

Kills	5 (11/5/22 at CSU)
Attempts	24 (3/22/21 at PFW)
Hitting %	1.000 [1-0-1] (9/17/21 at But.)
Blocks	2 (Twice)
Digs	same
Aces	4 (10/22/21 vs. IUPUI)
Assists	9 (8/28/22 at Notre Dame)

13 Kara Erdmann | So. | DS**2023 Season Highs**

Kills	n/a
Attempts	1 (8/25 at West. Michigan)
Hitting %	-1.000 [0-1-1] (8/25 at WMU)
Blocks	n/a
Digs	16 (8/26 vs. Villanova)
Aces	1 (9/4 vs. Northwestern)
Assists	3 (Twice)

Career Highs

Kills	1 (Twice)
Attempts	2 (Twice)
Hitting %	1.000 [1-0-1] (Twice)
Blocks	same
Digs	28 (11/18/22 vs. CSU)
Aces	2 (11/1/22 vs. PFW)
Assists	5 (9/30/22 at WSU)

16 Rachel Scott | So. | RS**2023 Season Highs**

Kills	4 (Twice)
Attempts	11 (9/1 vs. Mont. St.)
Hitting %300 [4-1-10] (9/4 vs. NW)
Blocks	3 (Twice)
Digs	2 (Twice)
Aces	n/a
Assists	1 (9/1 vs. Cal. Baptist)

Career Highs

Kills	same
Attempts	14 (9/2/22 vs. Utah)
Hitting %	same
Blocks	4 (9/2/22 vs. Bradley)
Digs	4 (9/2/22 vs. Bradley)
Aces	same
Assists	same

14 Madi Malone | Jr. | OH**2023 Season Highs**

Kills	17 (8/26 vs. Villanova)
Attempts	42 (8/26 vs. Villanova)
Hitting %296 [10-2-27] (9/4 vs. NW)
Blocks	4 (9/1 vs. Cal. Baptist)
Digs	19 (9/1 vs. Mont. St.)
Aces	1 (8/26 vs. Villanova)
Assists	3 (9/1 vs. Mont. St.)

Career Highs

Kills	29 (10/1/21 vs. WSU)
Attempts	66 (10/1/21 vs. WSU)
Hitting %467 [9-2-15] (9/11/21 at C-Ark)
Blocks	same
Digs	same
Aces	4 (11/11/21 at RMU)
Assists	3 (Twice)

17 Mati Jakscht | Gr. | DS**2023 Season Highs**

Kills	n/a
Attempts	n/a
Hitting %	n/a
Blocks	n/a
Digs	6 (9/1 vs. Cal. Baptist)
Aces	1 (9/1 vs. Cal. Baptist)
Assists	1 (9/1 vs. Cal. Baptist)

Career Highs

Kills	2 (10/18/22 vs. IUPUI)
Attempts	5 (3/22/21 at PFW)
Hitting %	1.000 [1-0-1] (Three Times)
Blocks	same
Digs	17 (3/8/21 at NKU)
Aces	3 (10/18/19 vs. IUPUI)
Assists	12 (2/9/21 vs. GB)

ACTIVE CAREER LEADERS

Matches Played

Ari Miller	109
Mati Jakscht	83
Kaley Blake	70

Consecutive Matches Played

Madi Malone	68
Four Players Tied	37
<i>(Blake, Geurts, Johnson, Schmitz)</i>	

Sets Played

Ari Miller	399
Mati Jakscht	251
Madi Malone	248

Kills

Ari Miller	1266
Madi Malone	744
Natalie Schmitz	381

Double-Figure Kills

Ari Miller	74
Madi Malone	44
Natalie Schmitz	21

Digs

Madi Malone	643
Sarah Schrader	627
Mati Jakscht	501

Double-Figure Digs

Madi Malone	34
Sarah Schrader	32
Mati Jakscht	16

Total Blocks

Ari Miller	344
Bri Guerts	138
Czhen Beneby	92

Assists

Kaley Blake	1246
Josie Johnson	645
Mati Jakscht	110

Double-Doubles

Madi Malone	24
Kaley Blake	15
Josie Johnson	4

Service Aces

Sarah Schrader	51
Ari Miller	41
Kaley Blake	38
Madi Malone	37

MILWAUKEE MATCH-BY-MATCH



2023-24 Milwaukee Women's Volleyball
Team Match-by-Match
All games

Date	Opponent	SP	Attack				Set			Serve				Recept			Blocking					BHE	POINTS	SCORE
			K	E	TA	PCT	A	TA	PCT	SA	SE	TA	PCT	RE	TA	PCT	DIG	BS	BA	BE	TOTAL			
08/25/2023	at Western Mich.	4	37	21	125	.128	35	119	.294	2	12	73	.836	7	86	.919	43	7	12	0	13.0	3	52.0	1-3
08/26/2023	vs UNI	3	29	13	101	.158	26	94	.277	4	8	67	.881	5	65	.923	33	4	10	2	9.0	0	42.0	0-3
08/26/2023	vs Villanova	5	65	20	155	.290	60	148	.405	6	5	111	.955	8	92	.913	61	1	10	2	6.0	3	77.0	2-3
09/01/2023	vs California Baptist	4	45	29	158	.101	44	166	.265	2	4	80	.950	4	91	.956	64	4	12	1	10.0	4	57.0	1-3
09/01/2023	vs Montana St.	4	62	18	140	.314	60	144	.417	1	3	97	.969	13	81	.840	69	1	20	0	11.0	0	74.0	3-1
09/02/2023	at St. Thomas (MN)	3	49	13	112	.321	45	113	.398	1	6	74	.919	1	46	.978	58	1	16	2	9.0	1	59.0	3-0
09/04/2023	Northwestern	4	52	21	137	.226	47	136	.346	5	3	88	.966	8	87	.908	50	3	10	5	8.0	0	65.0	3-1
Totals		27	339	135	928	.220	317	920	.345	21	41	590	.931	46	548	.916	378	21	90	12	66.0	11	426.0	
Opponents		27	365	159	977	.211	347	981	.354	46	57	605	.906	21	549	.962	392	7	105	6	59.5	4	470.5	

Team Averages

Sets Played	Kills per set	Assists per set	Service aces per set	Digs per set	Blocks per set	Points per set	Ball handling error per set	Reception errors per set
27	12.56	11.74	0.78	14.00	2.44	15.78	0.41	1.70

OPPONENT MATCH-BY-MATCH



2023-24 Milwaukee Women's Volleyball Opponents Match-by-Match All games

Date	Opponent	SP	Attack				Set			Serve				Recept			DIG	Blocking				BHE	POINTS	SCORE
			K	E	TA	PCT	A	TA	PCT	SA	SE	TA	PCT	RE	TA	PCT		BS	BA	BE	TOTAL			
08/25/2023	at Western Mich.	4	53	24	129	.225	50	125	.400	7	9	95	.905	2	61	.967	60	2	8	1	6.0	0	66.0	1-3
08/26/2023	vsUNI	3	49	21	111	.252	47	108	.435	5	8	73	.890	4	59	.932	51	0	14	0	7.0	1	61.0	0-3
08/26/2023	vsVillanova	5	70	22	165	.291	67	163	.411	8	14	106	.868	6	106	.943	59	1	16	1	9.0	1	87.0	2-3
09/01/2023	vsCalifornia Baptist	4	56	22	148	.230	55	154	.357	4	6	97	.938	2	76	.974	69	2	18	1	11.0	2	71.0	1-3
09/01/2023	vsMontana St.	4	52	27	158	.158	47	164	.287	13	7	88	.920	1	94	.989	55	1	14	2	8.0	0	73.0	3-1
09/02/2023	at St. Thomas (MN)	3	29	19	123	.081	29	130	.223	1	6	52	.885	1	68	.985	47	0	12	0	6.0	0	36.0	3-0
09/04/2023	Northwestern	4	56	24	143	.224	52	137	.380	8	7	94	.926	5	85	.941	51	1	23	1	12.5	0	76.5	3-1
Opponent totals		27	365	159	977	.211	347	981	.354	46	57	605	.906	21	549	.962	392	7	105	6	59.5	4	470.5	
Milwaukee totals		27	339	135	928	.220	317	920	.345	21	41	590	.931	46	548	.916	378	21	90	12	66.0	11	426.0	

Team Averages

Sets Played	Kills per set	Assists per set	Service aces per set	Digs per set	Blocks per set	Points per set	Ball handling error per set	Reception errors per set
27	13.52	12.85	1.70	14.52	2.20	17.43	0.15	0.78